

**MASTER
SPECIAL ASSESSMENT METHODOLOGY REPORT**

SPECIAL ASSESSMENT BONDS, SERIES 2018

2018 PROJECT

PREPARED FOR THE

**CENTURY GARDENS AT TAMAMI
COMMUNITY DEVELOPMENT DISTRICT**

BOARD OF SUPERVISORS

June 20, 2018

SPECIAL DISTRICT SERVICES, INC.
2501A Burns Road
Palm Beach Gardens, Florida 33410
561.630.4922 Telephone
877.737.4922 Toll Free
561.630.4923 Facsimile

1.0 INTRODUCTION

The Century Gardens at Tamiami Community Development District (the “District”), a local unit of special-purpose government organized and existing under Chapter 190, Florida Statutes (“F.S.”) as amended originally contained 67.44+/- acres of land located in the unincorporated area of Miami-Dade County, Florida. The District boundaries were expanded in the year 2014 to include 53.47+/- acres of additional land making the total District approximately 120.91+/- acres, including a vacant tract of land (4.06+/- acres – Tract “B”) and later rezoned to include the development of 47 townhome units. The addition of the townhome units brought the *total* residential unit count in the District to 891 units.

This Master Special Assessment Methodology Report (the “Master Report”) will provide the allocation of special assessments as it relates to the sale and issuance of Special Assessment Bonds, Series 2018 (the “Series 2018 Bonds”) for the purpose of financing the acquisition of the Expansion Area Clubhouse (the “Clubhouse”) improvements (as defined herein) including related amenities and to pay a portion of the costs of the Operation and Maintenance (the “O&M”) of the clubhouse facilities (collectively the “2018 Project”) located on Tract M within the 2014 Expansion Area (the “Expansion Area”) in the District. For the purposes of this Master Report the Expansion Area of the District contains 445 residential dwelling units.

This Master Report equitably allocates the costs being incurred by the District to provide the benefits of the 2018 Project to the developed lots/parcels within the Expansion Area as identified herein on **Exhibit “A”**. The Clubhouse improvements are described in the adopted Third Supplemental Engineer’s Report (the “Engineer’s Report”) dated June 20, 2018, as may be revised and prepared by Alvarez Engineer’s Inc. (the “District’s Engineer”).

2.0 PROJECTS TO BE FUNDED BY THE DISTRICT

The District anticipates issuing Series 2018 Bonds to finance the 2018 Project. The total cost of the 2018 Project is estimated to be approximately \$4,418,000.00. A detail of the 2018 Project costs is included herein on **Table A**. The Series 2018 Bonds will be repaid through the levy of non-ad valorem special assessments on all assessable property within the Expansion Area of the District. The 2018 Project has been designed to be functional and confer special benefits to the landowners in the Expansion Area of the District.

The fully developed community within the Expansion Area of the District consists of 445 residential units as shown herein on **Table C** and **Table D**. The 2018 Project contemplated by the District will provide recreational facilities and initial upkeep thereof, which benefit all of the assessable property within the Expansion Area in the District. The District plans to purchase the Gardens at the Hammocks Clubhouse (the “Clubhouse”) and related amenities, all as more specifically described in the Engineer’s Report.

The construction costs identified in this Master Report were provided by the District Engineer. Special District Services, Inc., as District Manager, makes no representation regarding the accuracy or validity of those costs and did not undertake any analysis or verification regarding such costs.

2.1 FUNDING OF IMPROVEMENTS

To defray the cost of the 2018 Project, the District will impose non-ad valorem special assessments on benefited real property in the Expansion Area of the District. These assessments are based on the special and peculiar benefits accruing to such property from the improvements and services comprising the 2018 Project. The use of non-ad valorem special assessments has an advantage in that the properties that receive the special benefits from the 2018 Project are the only properties that are obligated to pay for those facilities and services. The capital facilities which will be funded through these special assessments include only facilities which may be undertaken by a community development district under Chapter 190, F.S. This Master Report is designed to meet the requirements of Chapters 170, 190 and 197, F.S. and will describe the expected terms and conditions of the Series 2018 Bonds.

In summary, special assessments may be made only: (1) for facilities or services which provide special benefits to property as distinct from general benefits, (2) only against property which receives that special benefit, (3) in proportion to the benefits received by such properties, and (4) according to fair and reasonable methods that the governing body of the jurisdiction determines. The special assessments placed upon various benefited properties within the Expansion Area in the District must be sufficient to cover the debt service of the Series 2018 Bonds that will be issued for financing the 2018 Project intended to be owned by the District. The assessments must be fairly and reasonably allocated to the properties being assessed.

2.2 ALLOCATION OF BENEFIT AND ASSESSMENTS

In developing the methodology used for special assessments for the Expansion Area in the District, two (2) interrelated factors were used:

- A. Allocation of Benefit: Each parcel of assessable land within the Expansion Area benefits from the proposed 2018 Project.
- B. Cost/Benefit: The special assessments imposed on each assessable parcel of land within the Expansion Area cannot exceed the value of the benefits provided to such parcel from the proposed 2018 Project.

The improvements comprising the 2018 Project is an integrated system of recreational facilities designed to provide benefits to the Expansion Area as a whole. There are 445 residential units that are members of the Clubhouse, in accordance with the obligation set forth in the Gardens at the Hammocks Club Club Plan, as amended. For the purpose of this Master Report it has been determined that each of the 445 units within the Expansion Area will receive equal and comparable benefit; therefore, the fair and reasonable method of allocating the benefit to each planned residential unit in the Expansion Area has been accomplished by assigning *one (1) equivalent residential unit* (“ERU”) to each of the 445 residential units within the Expansion Area. Accordingly, the 2018 Project benefits each residential unit within the Expansion Area in this same proportion resulting in the debt service assessments also being allocated to each residential unit within the Expansion Area in this proportion. The 2018 Project benefits and the Series 2018 Bond debt allocations are shown herein on **Table C** and **Table D**.

To defray the operation and maintenance costs for the portions of the 2018 Project that will be owned by the District, the District will also impose on an annual basis non-ad valorem special

assessments on the benefitted real property within the Expansion Area in the District in the same amount per unit within the Expansion Area. Also, there will be certain annual administration costs derived from special benefits being delivered as a result of being part of the entire District.

2.3 COLLECTION OF SPECIAL ASSESSMENTS

The proposed special assessments relating to the 2018 Project for the Expansion Area will be collected through the Uniform Method of Collection described in Chapter 197, Section 197.3632; F.S. or any other legal means available to the District.

Since there are costs associated with the collection of the special assessments (whether by uniform method of collection as authorized under Chapter 197.3632, F.S. or other methods allowed by Florida law), these costs must also be included in the special assessment levy. These costs generally include the 1% collection fee of the County Tax Collector, a 1% service fee of the County Property Appraiser and a 4% discount for early payment of taxes. These additional costs may be reflected by dividing the annual debt service and operation and maintenance assessment amounts by 0.94. These costs will not be applicable if the District is not using the Uniform Method of Collection.

3.0 FINANCING STRUCTURE

The estimated cost of the 2018 Project is approximately \$4,418,000.00 and the costs associated therewith are identified herein on **Table A**.

The capital improvements comprising the 2018 Project are currently expected to be financed in whole by the Series 2018 Bonds and when issued, which will be payable from and secured by special assessments levied annually on all assessable properties within the Expansion Area in the District. The total aggregate principal amount of the Bonds contemplated to be issued by the District for the 2018 Project is approximately \$5,410,000.00. The proceeds of the Series 2018 Bonds will provide approximately \$4,418,000.00 for the 2018 Project and related costs. The sizing of the Series 2018 Bonds includes a debt service reserve fund equal to 100% of the maximum annual debt service, capitalized interest, issuance costs, O&M costs and other assumptions as shown herein on **Table B**.

4.0 MODIFCATIONS, REVISIONS AND TRUE-UP MECHANISM

Allocation of costs and benefits for the 2018 Project financed by the District for the Expansion Area (estimated at approximately \$4,418,000.00) is based on the number of dwelling units (445) developed within the Expansion Area in the District and benefitted by the infrastructure improvements comprising the 2018 Project. Based on an estimated Series 2018 Bond size of \$5,410,000.00, at an assumed interest rate of 5.50%, the maximum annual debt service for the Series 2018 Bonds as shown herein on **Table E**, will be approximately \$391,829.00 which has been grossed up to include the 1% County Tax Collector fee, 1% County Property Appraiser fee, and 4% discount for early payment of taxes.

A true-up mechanism would apply to any undeveloped parcels within the Expansion Area of the District; however, since all units in the Expansion Area have been built the true-up mechanism would not be applicable to this Master Report.

All assessments levied run with the land. In the event that additional land is annexed into the Expansion Area of the District which is currently not subject to the assessments and is developed in such a manner as to receive special benefit from the 2018 Project described herein, it will be necessary for this assessment methodology to be re-applied to include such parcels. The additional land will, as a result of re-applying this allocation methodology, then be allocated an appropriate share of the special assessments while all currently assessed parcels will receive a relative reduction in their assessments.

5.0 PRELIMINARY ASSESSMENT ROLL

As of the date of this Master Report, the Expansion Area of the District has been platted and folio numbers have been assigned to each parcel as described in **Table F** and on **Exhibit B** attached hereto. The special assessments (debt) have been assigned as described in this Master Report and the Preliminary Assessment Roll defines the total allocation of par debt per unit type and the estimated annual maximum debt service assessment per unit.

6.0 ADDITIONAL STIPULATIONS

Certain financing, development status, and engineering data was provided by members of District staff and/or the Developer. The allocation methodology described herein was based on information provided by those professionals. Special District Services, Inc. makes no representations regarding said information beyond restatement of the factual information necessary for compilation of this Master Report.

Special District Services, Inc. does not represent the District as a Municipal Advisor or Securities Broker nor is Special District Services, Inc. registered to provide such services as described in Section 15B of the Securities and Exchange Act of 1934, as amended. Similarly, Special District Services, Inc. does not provide the District with financial advisory services or offer investment advice in any form.

TABLE A

COST ESTIMATE
2018 PROJECT

CENTURY GARDENS AT TAMIAMI COMMUNITY DEVELOPMENT DISTRICT
(EXPANSION AREA)

	2018 PROJECT ESTIMATED COSTS
CLUBHOUSE AND RELATED AMENITIES	\$ 4,183,000.00
REAL ESTATE TRANSACTIONAL COSTS*	\$ 125,000.00
OPERATIONS AND MAINTENANCE COSTS (4 months)**	\$ 110,000.00
TOTAL ESTIMATED 2018 PROJECT COSTS	\$ 4,418,000.00

Notes: *Estimated amount, subject to change.

**Period is estimated and is subject to change.

TABLE B

SERIES 2018 BONDS
2018 PROJECT

**CENTURY GARDENS AT TAMIAMI COMMUNITY DEVELOPMENT DISTRICT
(EXPANSION AREA)**

	SERIES 2018 BONDS
PAR ISSUE AMOUNT	\$ 5,410,000.00
Debt Service Reserve Fund (DSRF - 100% MADS)	\$ (372,237.00)
Capitalized Interest (12 months)*	\$ (297,550.00)
Cost of Issuance	\$ (321,724.00)
Rounding	\$ (489.00)
PROJECT FUNDS PRODUCED	\$ 4,418,000.00
Bond Interest Rate	5.50%
Principal Amortization Period (Years)	30

Note: *Capitalized Interest Period to be adjusted on final pricing

TABLE C

ALLOCATION OF 2018 PROJECT BENEFITS

CENTURY GARDENS AT TAMIAMI COMMUNITY DEVELOPMENT DISTRICT
(EXPANSION AREA)

Residential Type of Use	Number of Residential Units	ERU Factor	Total ERUs*	2018 Project Benefit Allocation/Type*	2018 Project Benefit/Unit*
Villa	160	1.0	160	\$1,588,494	\$9,928
Townhome	148	1.0	148	\$1,469,357	\$9,928
Single Family	137	1.0	137	\$1,360,148	\$9,928
Total	445	N/A	445	\$4,418,000	N/A

*Rounded

TABLE D

ALLOCATION OF BOND DEBT
SERIES 2018 BONDS

CENTURY GARDENS AT TAMIAMI COMMUNITY DEVELOPMENT DISTRICT
(EXPANSION AREA)

Residential Type of Use	Number of Residential Units	ERU Factor	Total ERUs*	Series 2018 Bond Debt Allocation/Type*	Series 2018 Bond Debt/Unit*
Villa	160	1.0	160	\$1,945,169	\$12,157
Townhome	148	1.0	148	\$1,799,281	\$12,157
Single Family	137	1.0	137	\$1,665,551	\$12,157
Total	445	N/A	445	\$5,410,000	N/A

*Rounded

TABLE E

CALCULATION OF ANNUAL DEBT ASSESSMENT
SERIES 2018 BONDS

CENTURY GARDENS AT TAMIAMI COMMUNITY DEVELOPMENT DISTRICT
(EXPANSION AREA)

	SERIES 2018 BONDS
1 Maximum Annual Debt Service	\$ 372,237.00
2 Maximum Annual Debt Service Assessment to be Collected	\$ 391,828.42 *
3 Total Number of Acres in Expansion Area	53.47
4 Total Number of Residential Units in Expansion Area	445
5 Adjusted Maximum Annual Debt Service Per Residential Unit	see Table F

*Grossed up to include 1% collection fee of the County Tax Collector, 1% service fee of the County Property Appraiser and 4% for early payment of taxes. These costs will not apply if the assessments securing the Series 2018 Bonds are being direct billed.

TABLE F

ALLOCATION OF DEBT SERVICE ASSESSMENTS
SERIES 2018 BONDS

PRELIMINARY ASSESSMENT ROLL

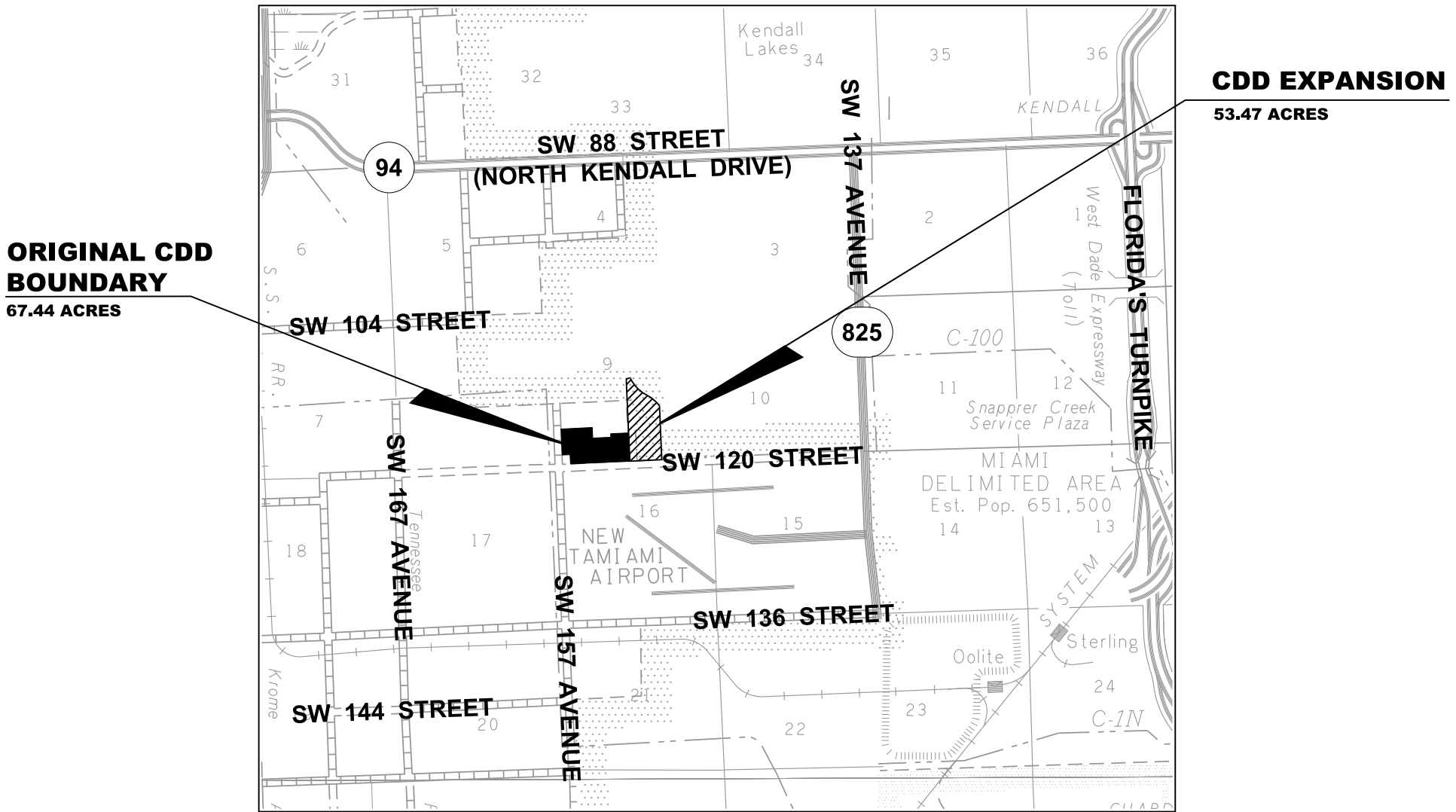
**CENTURY GARDENS AT TAMIAMI COMMUNITY DEVELOPMENT DISTRICT
(EXPANSION AREA)**

Residential Type of Use	Number of Residential Units by Type	**Series 2018 Bond PAR Allocation by Unit Type	**Series 2018 Bond PAR Allocation Per Unit	**Maximum Annual Debt Service Assessment*	**Maximum Annual Debt Service Assessment Per Residential Unit*
Villa	160	\$1,945,169	\$12,157	\$140,882.53	\$881
Townhome	148	\$1,799,281	\$12,157	\$130,316.34	\$881
Single Family	137	\$1,665,551	\$12,157	\$120,630.66	\$881
TOTAL	445	\$5,410,000	N/A	\$391,829.53	N/A

*Grossed up to include 1% collection fee of the County Tax Collector, 1% service fee of the County Property Appraiser and 4% Discount for Early Payment. These costs will not apply if the assessments securing the Series 2018 Bonds are being direct billed.

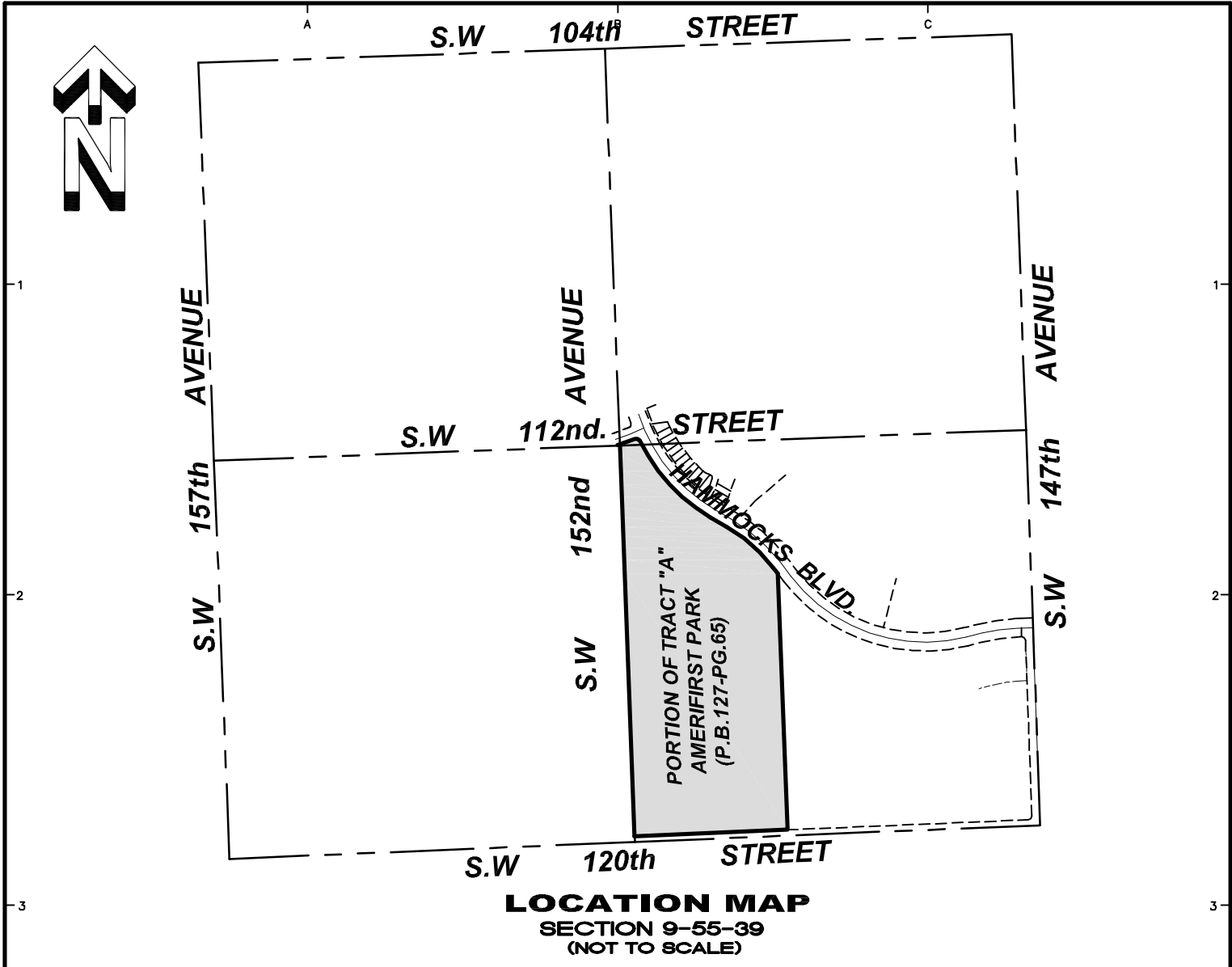
**Rounded

EXHIBIT A (Location Map & Legal)



ALVAREZ ENGINEERS, INC.
CENTURY GARDENS AT TAMIAMI C.D.D.
LOCATION MAP





LOCATION MAP
SECTION 9-55-39
(NOT TO SCALE)

SURVEYOR'S NOTES:

- 1) -This is not a Boundary Survey, but only a GRAPHIC DEPICTION of the description shown hereon.
- 2) -Not valid without the signature and the original raised seal of a Florida Licensed Surveyor and Mapper. Additions or deletions to survey maps or reports by other than the signing party or parties is prohibited without written consent of the signing party or parties.
- 3) -There may be additional Restrictions not shown on this SKETCH AND LEGAL DESCRIPTION that may be found in the Public Records of this County, Examination of ABSTRACT OF TITLE will be made to determine recorded instruments, if any affecting this property.
- 4) North arrow direction and bearings based on assumed value of S87°26'00"W along the center line of S.W. 120th. Street as shown on the Plat of "AMERIFIRST PARK", Plat Book 127, Page 65 of the Public Records of Miami-Dade County, Florida.
- 5) -The SKETCH AND LEGAL DESCRIPTION shown hereon is based on the information provided by the Client.
- 6) -No title research has been performed to determine if there are any conflict existing or arising out of the creation of the Easements, Right-of-ways, Parcel Descriptions, or any other type of encumbrances that the hereon described legal may be utilized for.

SURVEYOR'S CERTIFICATE:

I Hereby Certify to the best of my knowledge and belief that this drawing is a true and correct representation of the SKETCH AND LEGAL DESCRIPTION of the real property described hereon. I further Certify that this SKETCH AND LEGAL DESCRIPTION was prepared in accordance with the applicable provisions of Chapter 5J-17 (Formerly 61G17-6), Florida Administrative Code.
Ford, Armenteros & Fernandez, Inc. L.B. #6557
Date: JUNE 26, 2013.

Omar Armenteros, P.S.M., For the Firm
Professional Surveyor and Mapper
State of Florida, Registration No.3679

CENTURY GARDENS AT TAMAMI / CDD ADDITIONAL SITE



FORD, ARMENTEROS & FERNANDEZ, INC.
1950 N.W. 94th AVENUE, 2nd FLOOR
DORAL, FLORIDA 33172
PH. (305) 477-6472
FAX (305) 470-2805

TYPE OF PROJECT:		SKETCH AND LEGAL DESCRIPTION	
SHEET NAME:		LOCATION MAP AND NOTES	
PREPARED FOR:			
LENNAR HOMES, LLC.			
DRAWN BY:	E.R.	DATE:	JUNE 26 2013.
DWG. CHECKED BY:		SCALE:	N/A
CHECKED BY:		PROJECT No:	06A130-1000
SHEET:			1
			OF 3 SHEETS

Q:\F.C. \E&S \Survey\SkL\06A130 (HAMMOCKS RESIDENTIAL)\06A130-1000.dwg

A

B

C

LEGAL DESCRIPTION:

Tract A, AMERIFISRT PARK, according to the Plat thereof, as recorded in Plat Book 127, Page 65, of the Public Records of Miami-Dade County, Florida.

LESS that portion of Tract "A", of AMERIFIRST PARK, according to the Plat thereof, as recorded in Plat Book 127, Page 65, of the Public Records of Miami-Dade County, Florida, lying Easterly of a line as measured 1040.00 feet Easterly of, at right angles to and parallel with the Westerly line of said Tract "A".

1

1

2

2

3

3

4

4

5

5

A

B

C

Q:\F.C. \E&S \Survey\SA\06A130 (HAMMOCKS RESIDENTIAL)\06A130-1000.dwg

CENTURY GARDENS AT TAMAMI / CDD ADDITIONAL SITE



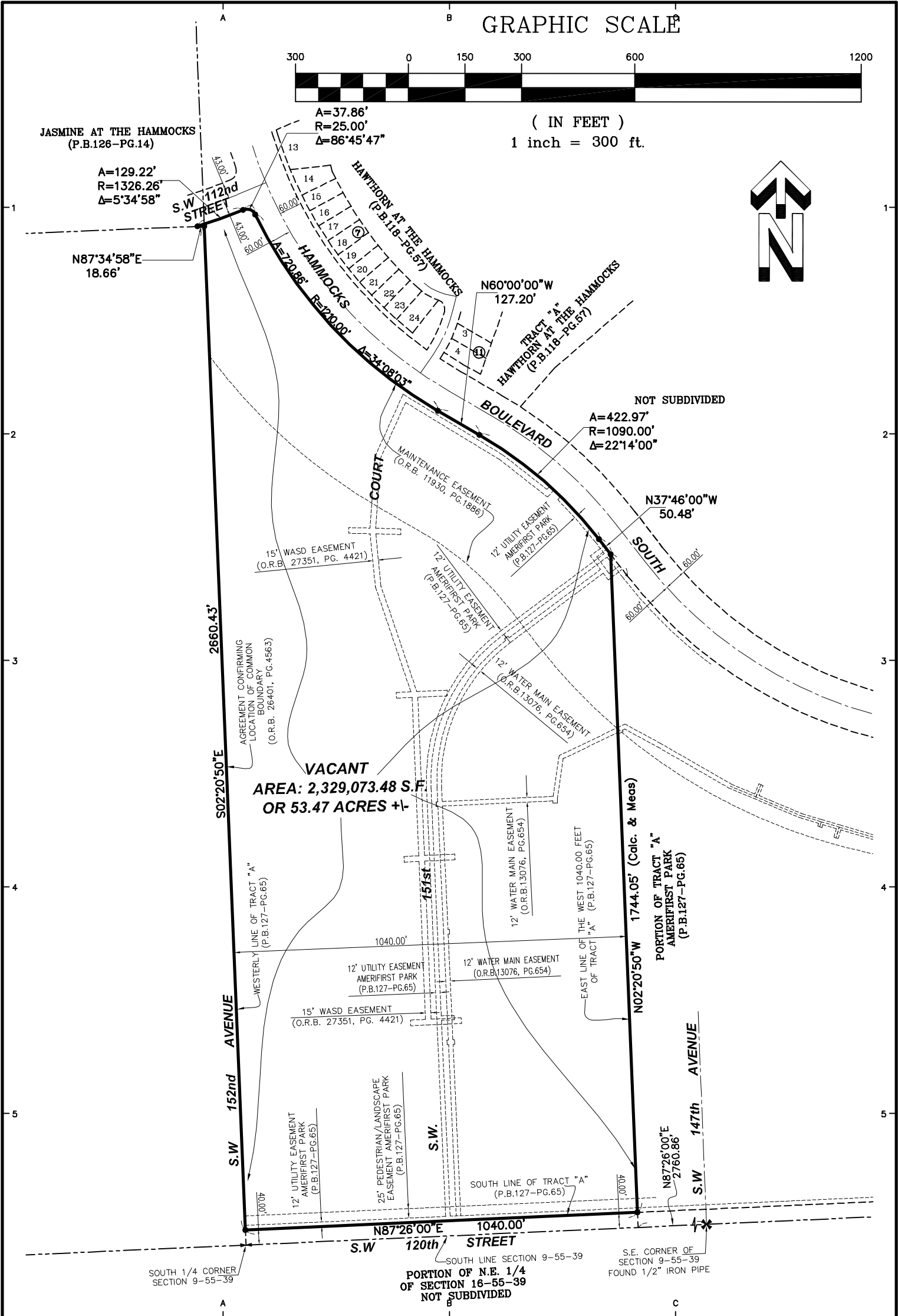
FORD, ARMENTEROS & FERNANDEZ, INC.
1950 N.W. 94th AVENUE, 2nd FLOOR
DORAL, FLORIDA 33172
PH. (305) 477-6472
FAX (305) 470-2805

TYPE OF PROJECT:		SKETCH AND LEGAL DESCRIPTION	
SHEET NAME:		LEGAL DESCRIPTION TO ACCOMPANY SKETCH	
PREPARED FOR:		LENNAR HOMES, LLC.	
DRAWN BY:	E.R.	DATE:	JUNE 26 2013.
DWG. CHECKED BY:		SCALE:	N/A
CHECKED BY:		PROJECT No:	06A130-1000
			SHEET: 2 OF 3 SHEETS

GRAPHIC SCALE



(IN FEET)
1 inch = 300 ft.



Q:\F.C. \E&S \Survey\Sk\06A130 (HAMMOCKS RESIDENTIAL)\06A130-1000.dwg

CENTURY GARDENS AT TAMiami / CDD ADDITIONAL SITE



FORD, ARMENTEROS & FERNANDEZ, INC.
1950 N.W. 94th AVENUE, 2nd FLOOR
DORAL, FLORIDA 33172
PH. (305) 477-6472
FAX (305) 470-2805

TYPE OF PROJECT:		SKETCH AND LEGAL DESCRIPTION	
SHEET NAME:		SKETCH TO ACCOMPANY LEGAL DESCRIPTION	
PREPARED FOR:		LENNAR HOMES, LLC.	
DRAWN BY:	E.R.	DATE:	JUNE 26 2013.
DWG. CHECKED BY:		SCALE:	1"=300'
CHECKED BY:		PROJECT No:	06A130-1000
SHEET:			3
			OF 3 SHEETS

EXHIBIT B

ALLOCATION OF DEBT SERVICE ASSESSMENT
SERIES 2018 BONDS

PRELIMINARY ASSESSMENT ROLL

CENTURY GARDENS AT TAMIAMI COMMUNITY DEVELOPMENT DISTRICT
(2018 PROJECT - EXPANSION AREA)

CDD/DISTRICT	FOLIO/PARCEL ID	UNIT TYPE	UNITS	**ANNUAL DEBT ASSESSMENT
CENTURY GARDENS AT TAMIAMI	30-5909-050-0010	EXPANSION - SINGLE FAMILY	1	\$836.49
CENTURY GARDENS AT TAMIAMI	30-5909-050-0020	EXPANSION - SINGLE FAMILY	1	\$836.49
CENTURY GARDENS AT TAMIAMI	30-5909-050-0030	EXPANSION - SINGLE FAMILY	1	\$836.49
CENTURY GARDENS AT TAMIAMI	30-5909-050-0040	EXPANSION - SINGLE FAMILY	1	\$836.49
CENTURY GARDENS AT TAMIAMI	30-5909-050-0050	EXPANSION - SINGLE FAMILY	1	\$836.49
CENTURY GARDENS AT TAMIAMI	30-5909-050-0060	EXPANSION - SINGLE FAMILY	1	\$836.49
CENTURY GARDENS AT TAMIAMI	30-5909-050-0070	EXPANSION - SINGLE FAMILY	1	\$836.49
CENTURY GARDENS AT TAMIAMI	30-5909-050-0080	EXPANSION - SINGLE FAMILY	1	\$836.49
CENTURY GARDENS AT TAMIAMI	30-5909-050-0090	EXPANSION - SINGLE FAMILY	1	\$836.49
CENTURY GARDENS AT TAMIAMI	30-5909-050-0100	EXPANSION - SINGLE FAMILY	1	\$836.49
CENTURY GARDENS AT TAMIAMI	30-5909-050-0110	EXPANSION - SINGLE FAMILY	1	\$836.49
CENTURY GARDENS AT TAMIAMI	30-5909-050-0120	EXPANSION - SINGLE FAMILY	1	\$836.49
CENTURY GARDENS AT TAMIAMI	30-5909-050-0130	EXPANSION - SINGLE FAMILY	1	\$836.49
CENTURY GARDENS AT TAMIAMI	30-5909-050-0140	EXPANSION - SINGLE FAMILY	1	\$836.49
CENTURY GARDENS AT TAMIAMI	30-5909-050-0150	EXPANSION - SINGLE FAMILY	1	\$836.49
CENTURY GARDENS AT TAMIAMI	30-5909-050-0160	EXPANSION - SINGLE FAMILY	1	\$836.49
CENTURY GARDENS AT TAMIAMI	30-5909-050-0170	EXPANSION - SINGLE FAMILY	1	\$836.49
CENTURY GARDENS AT TAMIAMI	30-5909-050-0180	EXPANSION - SINGLE FAMILY	1	\$836.49
CENTURY GARDENS AT TAMIAMI	30-5909-050-0190	EXPANSION - SINGLE FAMILY	1	\$836.49
CENTURY GARDENS AT TAMIAMI	30-5909-050-0200	EXPANSION - SINGLE FAMILY	1	\$836.49
CENTURY GARDENS AT TAMIAMI	30-5909-050-0210	EXPANSION - SINGLE FAMILY	1	\$836.49
CENTURY GARDENS AT TAMIAMI	30-5909-050-0220	EXPANSION - SINGLE FAMILY	1	\$836.49
CENTURY GARDENS AT TAMIAMI	30-5909-050-0230	EXPANSION - SINGLE FAMILY	1	\$836.49
CENTURY GARDENS AT TAMIAMI	30-5909-050-0240	EXPANSION - SINGLE FAMILY	1	\$836.49
CENTURY GARDENS AT TAMIAMI	30-5909-050-0250	EXPANSION - SINGLE FAMILY	1	\$836.49
CENTURY GARDENS AT TAMIAMI	30-5909-050-0260	EXPANSION - SINGLE FAMILY	1	\$836.49
CENTURY GARDENS AT TAMIAMI	30-5909-050-0270	EXPANSION - SINGLE FAMILY	1	\$836.49
CENTURY GARDENS AT TAMIAMI	30-5909-050-0280	EXPANSION - SINGLE FAMILY	1	\$836.49
CENTURY GARDENS AT TAMIAMI	30-5909-050-0290	EXPANSION - SINGLE FAMILY	1	\$836.49
CENTURY GARDENS AT TAMIAMI	30-5909-050-0300	EXPANSION - SINGLE FAMILY	1	\$836.49
CENTURY GARDENS AT TAMIAMI	30-5909-050-0310	EXPANSION - SINGLE FAMILY	1	\$836.49

**Has not been grossed up to include collection fees and discount for early payment.

EXHIBIT B

ALLOCATION OF DEBT SERVICE ASSESSMENT
SERIES 2018 BONDS

PRELIMINARY ASSESSMENT ROLL

CENTURY GARDENS AT TAMIAMI COMMUNITY DEVELOPMENT DISTRICT
(2018 PROJECT - EXPANSION AREA)

CENTURY GARDENS AT TAMIAMI	30-5909-050-0320	EXPANSION - SINGLE FAMILY	1	\$836.49
CENTURY GARDENS AT TAMIAMI	30-5909-050-0330	EXPANSION - SINGLE FAMILY	1	\$836.49
CENTURY GARDENS AT TAMIAMI	30-5909-050-0340	EXPANSION - SINGLE FAMILY	1	\$836.49
CENTURY GARDENS AT TAMIAMI	30-5909-050-0350	EXPANSION - SINGLE FAMILY	1	\$836.49
CENTURY GARDENS AT TAMIAMI	30-5909-050-0360	EXPANSION - SINGLE FAMILY	1	\$836.49
CENTURY GARDENS AT TAMIAMI	30-5909-050-0370	EXPANSION - SINGLE FAMILY	1	\$836.49
CENTURY GARDENS AT TAMIAMI	30-5909-050-0380	EXPANSION - SINGLE FAMILY	1	\$836.49
CENTURY GARDENS AT TAMIAMI	30-5909-050-0390	EXPANSION - SINGLE FAMILY	1	\$836.49
CENTURY GARDENS AT TAMIAMI	30-5909-050-0400	EXPANSION - SINGLE FAMILY	1	\$836.49
CENTURY GARDENS AT TAMIAMI	30-5909-050-0410	EXPANSION - SINGLE FAMILY	1	\$836.49
CENTURY GARDENS AT TAMIAMI	30-5909-050-0420	EXPANSION - SINGLE FAMILY	1	\$836.49
CENTURY GARDENS AT TAMIAMI	30-5909-050-0430	EXPANSION - SINGLE FAMILY	1	\$836.49
CENTURY GARDENS AT TAMIAMI	30-5909-050-0440	EXPANSION - SINGLE FAMILY	1	\$836.49
CENTURY GARDENS AT TAMIAMI	30-5909-050-0450	EXPANSION - SINGLE FAMILY	1	\$836.49
CENTURY GARDENS AT TAMIAMI	30-5909-050-0460	EXPANSION - SINGLE FAMILY	1	\$836.49
CENTURY GARDENS AT TAMIAMI	30-5909-050-0470	EXPANSION - SINGLE FAMILY	1	\$836.49
CENTURY GARDENS AT TAMIAMI	30-5909-050-0480	EXPANSION - SINGLE FAMILY	1	\$836.49
CENTURY GARDENS AT TAMIAMI	30-5909-050-0490	EXPANSION - SINGLE FAMILY	1	\$836.49
CENTURY GARDENS AT TAMIAMI	30-5909-050-0500	EXPANSION - SINGLE FAMILY	1	\$836.49
CENTURY GARDENS AT TAMIAMI	30-5909-050-0510	EXPANSION - SINGLE FAMILY	1	\$836.49
CENTURY GARDENS AT TAMIAMI	30-5909-050-0520	EXPANSION - SINGLE FAMILY	1	\$836.49
CENTURY GARDENS AT TAMIAMI	30-5909-050-0530	EXPANSION - SINGLE FAMILY	1	\$836.49
CENTURY GARDENS AT TAMIAMI	30-5909-050-0540	EXPANSION - SINGLE FAMILY	1	\$836.49
CENTURY GARDENS AT TAMIAMI	30-5909-050-0550	EXPANSION - SINGLE FAMILY	1	\$836.49
CENTURY GARDENS AT TAMIAMI	30-5909-050-0560	EXPANSION - SINGLE FAMILY	1	\$836.49
CENTURY GARDENS AT TAMIAMI	30-5909-050-0570	EXPANSION - SINGLE FAMILY	1	\$836.49
CENTURY GARDENS AT TAMIAMI	30-5909-050-0580	EXPANSION - SINGLE FAMILY	1	\$836.49
CENTURY GARDENS AT TAMIAMI	30-5909-050-0590	EXPANSION - SINGLE FAMILY	1	\$836.49
CENTURY GARDENS AT TAMIAMI	30-5909-050-0600	EXPANSION - SINGLE FAMILY	1	\$836.49
CENTURY GARDENS AT TAMIAMI	30-5909-050-0610	EXPANSION - SINGLE FAMILY	1	\$836.49
CENTURY GARDENS AT TAMIAMI	30-5909-050-0620	EXPANSION - SINGLE FAMILY	1	\$836.49
CENTURY GARDENS AT TAMIAMI	30-5909-050-0630	EXPANSION - SINGLE FAMILY	1	\$836.49
CENTURY GARDENS AT TAMIAMI	30-5909-050-0640	EXPANSION - SINGLE FAMILY	1	\$836.49

**Has not been grossed up to include collection fees and discount for early payment.

EXHIBIT B

ALLOCATION OF DEBT SERVICE ASSESSMENT
SERIES 2018 BONDS

PRELIMINARY ASSESSMENT ROLL

CENTURY GARDENS AT TAMIAMI COMMUNITY DEVELOPMENT DISTRICT
(2018 PROJECT - EXPANSION AREA)

CENTURY GARDENS AT TAMIAMI	30-5909-050-0650	EXPANSION - SINGLE FAMILY	1	\$836.49
CENTURY GARDENS AT TAMIAMI	30-5909-050-0660	EXPANSION - SINGLE FAMILY	1	\$836.49
CENTURY GARDENS AT TAMIAMI	30-5909-050-0670	EXPANSION - SINGLE FAMILY	1	\$836.49
CENTURY GARDENS AT TAMIAMI	30-5909-050-0680	EXPANSION - SINGLE FAMILY	1	\$836.49
CENTURY GARDENS AT TAMIAMI	30-5909-050-0690	EXPANSION - SINGLE FAMILY	1	\$836.49
CENTURY GARDENS AT TAMIAMI	30-5909-050-0700	EXPANSION - SINGLE FAMILY	1	\$836.49
CENTURY GARDENS AT TAMIAMI	30-5909-050-0710	EXPANSION - SINGLE FAMILY	1	\$836.49
CENTURY GARDENS AT TAMIAMI	30-5909-050-0720	EXPANSION - SINGLE FAMILY	1	\$836.49
CENTURY GARDENS AT TAMIAMI	30-5909-050-0730	EXPANSION - SINGLE FAMILY	1	\$836.49
CENTURY GARDENS AT TAMIAMI	30-5909-050-0740	EXPANSION - SINGLE FAMILY	1	\$836.49
CENTURY GARDENS AT TAMIAMI	30-5909-050-0750	EXPANSION - SINGLE FAMILY	1	\$836.49
CENTURY GARDENS AT TAMIAMI	30-5909-050-0760	EXPANSION - SINGLE FAMILY	1	\$836.49
CENTURY GARDENS AT TAMIAMI	30-5909-050-0770	EXPANSION - SINGLE FAMILY	1	\$836.49
CENTURY GARDENS AT TAMIAMI	30-5909-050-0780	EXPANSION - SINGLE FAMILY	1	\$836.49
CENTURY GARDENS AT TAMIAMI	30-5909-050-0790	EXPANSION - SINGLE FAMILY	1	\$836.49
CENTURY GARDENS AT TAMIAMI	30-5909-050-0800	EXPANSION - SINGLE FAMILY	1	\$836.49
CENTURY GARDENS AT TAMIAMI	30-5909-050-0810	EXPANSION - SINGLE FAMILY	1	\$836.49
CENTURY GARDENS AT TAMIAMI	30-5909-050-0820	EXPANSION - SINGLE FAMILY	1	\$836.49
CENTURY GARDENS AT TAMIAMI	30-5909-050-0830	EXPANSION - SINGLE FAMILY	1	\$836.49
CENTURY GARDENS AT TAMIAMI	30-5909-050-0840	EXPANSION - SINGLE FAMILY	1	\$836.49
CENTURY GARDENS AT TAMIAMI	30-5909-050-0850	EXPANSION - SINGLE FAMILY	1	\$836.49
CENTURY GARDENS AT TAMIAMI	30-5909-050-0860	EXPANSION - SINGLE FAMILY	1	\$836.49
CENTURY GARDENS AT TAMIAMI	30-5909-050-0870	EXPANSION - SINGLE FAMILY	1	\$836.49
CENTURY GARDENS AT TAMIAMI	30-5909-050-0880	EXPANSION - SINGLE FAMILY	1	\$836.49
CENTURY GARDENS AT TAMIAMI	30-5909-050-0890	EXPANSION - SINGLE FAMILY	1	\$836.49
CENTURY GARDENS AT TAMIAMI	30-5909-050-0900	EXPANSION - SINGLE FAMILY	1	\$836.49
CENTURY GARDENS AT TAMIAMI	30-5909-050-0910	EXPANSION - SINGLE FAMILY	1	\$836.49
CENTURY GARDENS AT TAMIAMI	30-5909-050-0920	EXPANSION - SINGLE FAMILY	1	\$836.49
CENTURY GARDENS AT TAMIAMI	30-5909-050-0930	EXPANSION - SINGLE FAMILY	1	\$836.49
CENTURY GARDENS AT TAMIAMI	30-5909-050-0940	EXPANSION - SINGLE FAMILY	1	\$836.49
CENTURY GARDENS AT TAMIAMI	30-5909-050-0950	EXPANSION - SINGLE FAMILY	1	\$836.49
CENTURY GARDENS AT TAMIAMI	30-5909-050-0960	EXPANSION - SINGLE FAMILY	1	\$836.49
CENTURY GARDENS AT TAMIAMI	30-5909-050-0970	EXPANSION - SINGLE FAMILY	1	\$836.49

**Has not been grossed up to include collection fees and discount for early payment.

EXHIBIT B

ALLOCATION OF DEBT SERVICE ASSESSMENT
SERIES 2018 BONDS

PRELIMINARY ASSESSMENT ROLL

CENTURY GARDENS AT TAMIAMI COMMUNITY DEVELOPMENT DISTRICT
(2018 PROJECT - EXPANSION AREA)

CENTURY GARDENS AT TAMIAMI	30-5909-050-0980	EXPANSION - SINGLE FAMILY	1	\$836.49
CENTURY GARDENS AT TAMIAMI	30-5909-050-0990	EXPANSION - SINGLE FAMILY	1	\$836.49
CENTURY GARDENS AT TAMIAMI	30-5909-050-1000	EXPANSION - SINGLE FAMILY	1	\$836.49
CENTURY GARDENS AT TAMIAMI	30-5909-050-1010	EXPANSION - SINGLE FAMILY	1	\$836.49
CENTURY GARDENS AT TAMIAMI	30-5909-050-1020	EXPANSION - SINGLE FAMILY	1	\$836.49
CENTURY GARDENS AT TAMIAMI	30-5909-050-1030	EXPANSION - SINGLE FAMILY	1	\$836.49
CENTURY GARDENS AT TAMIAMI	30-5909-050-1040	EXPANSION - SINGLE FAMILY	1	\$836.49
CENTURY GARDENS AT TAMIAMI	30-5909-050-1050	EXPANSION - SINGLE FAMILY	1	\$836.49
CENTURY GARDENS AT TAMIAMI	30-5909-050-1060	EXPANSION - SINGLE FAMILY	1	\$836.49
CENTURY GARDENS AT TAMIAMI	30-5909-050-1070	EXPANSION - SINGLE FAMILY	1	\$836.49
CENTURY GARDENS AT TAMIAMI	30-5909-050-1080	EXPANSION - SINGLE FAMILY	1	\$836.49
CENTURY GARDENS AT TAMIAMI	30-5909-050-1090	EXPANSION - SINGLE FAMILY	1	\$836.49
CENTURY GARDENS AT TAMIAMI	30-5909-050-1100	EXPANSION - SINGLE FAMILY	1	\$836.49
CENTURY GARDENS AT TAMIAMI	30-5909-050-1110	EXPANSION - SINGLE FAMILY	1	\$836.49
CENTURY GARDENS AT TAMIAMI	30-5909-050-1120	EXPANSION - SINGLE FAMILY	1	\$836.49
CENTURY GARDENS AT TAMIAMI	30-5909-050-1130	EXPANSION - SINGLE FAMILY	1	\$836.49
CENTURY GARDENS AT TAMIAMI	30-5909-050-1140	EXPANSION - SINGLE FAMILY	1	\$836.49
CENTURY GARDENS AT TAMIAMI	30-5909-050-1150	EXPANSION - SINGLE FAMILY	1	\$836.49
CENTURY GARDENS AT TAMIAMI	30-5909-050-1160	EXPANSION - SINGLE FAMILY	1	\$836.49
CENTURY GARDENS AT TAMIAMI	30-5909-050-1170	EXPANSION - SINGLE FAMILY	1	\$836.49
CENTURY GARDENS AT TAMIAMI	30-5909-050-1180	EXPANSION - SINGLE FAMILY	1	\$836.49
CENTURY GARDENS AT TAMIAMI	30-5909-050-1190	EXPANSION - SINGLE FAMILY	1	\$836.49
CENTURY GARDENS AT TAMIAMI	30-5909-050-1200	EXPANSION - SINGLE FAMILY	1	\$836.49
CENTURY GARDENS AT TAMIAMI	30-5909-050-1210	EXPANSION - SINGLE FAMILY	1	\$836.49
CENTURY GARDENS AT TAMIAMI	30-5909-050-1220	EXPANSION - SINGLE FAMILY	1	\$836.49
CENTURY GARDENS AT TAMIAMI	30-5909-050-1230	EXPANSION - SINGLE FAMILY	1	\$836.49
CENTURY GARDENS AT TAMIAMI	30-5909-050-1240	EXPANSION - SINGLE FAMILY	1	\$836.49
CENTURY GARDENS AT TAMIAMI	30-5909-050-1250	EXPANSION - SINGLE FAMILY	1	\$836.49
CENTURY GARDENS AT TAMIAMI	30-5909-050-1260	EXPANSION - SINGLE FAMILY	1	\$836.49
CENTURY GARDENS AT TAMIAMI	30-5909-050-1270	EXPANSION - SINGLE FAMILY	1	\$836.49
CENTURY GARDENS AT TAMIAMI	30-5909-050-1280	EXPANSION - SINGLE FAMILY	1	\$836.49
CENTURY GARDENS AT TAMIAMI	30-5909-050-1290	EXPANSION - SINGLE FAMILY	1	\$836.49
CENTURY GARDENS AT TAMIAMI	30-5909-050-1300	EXPANSION - SINGLE FAMILY	1	\$836.49

**Has not been grossed up to include collection fees and discount for early payment.

EXHIBIT B

ALLOCATION OF DEBT SERVICE ASSESSMENT
SERIES 2018 BONDS

PRELIMINARY ASSESSMENT ROLL

CENTURY GARDENS AT TAMIAMI COMMUNITY DEVELOPMENT DISTRICT
(2018 PROJECT - EXPANSION AREA)

CENTURY GARDENS AT TAMIAMI	30-5909-050-1310	EXPANSION - SINGLE FAMILY	1	\$836.49
CENTURY GARDENS AT TAMIAMI	30-5909-050-1320	EXPANSION - SINGLE FAMILY	1	\$836.49
CENTURY GARDENS AT TAMIAMI	30-5909-050-1330	EXPANSION - SINGLE FAMILY	1	\$836.49
CENTURY GARDENS AT TAMIAMI	30-5909-050-1340	EXPANSION - SINGLE FAMILY	1	\$836.49
CENTURY GARDENS AT TAMIAMI	30-5909-050-1350	EXPANSION - SINGLE FAMILY	1	\$836.49
CENTURY GARDENS AT TAMIAMI	30-5909-050-1360	EXPANSION - SINGLE FAMILY	1	\$836.49
CENTURY GARDENS AT TAMIAMI	30-5909-050-1370	EXPANSION - SINGLE FAMILY	1	\$836.49
CENTURY GARDENS AT TAMIAMI	30-5909-050-1380	EXPANSION - TOWNHOME	1	\$836.49
CENTURY GARDENS AT TAMIAMI	30-5909-050-1390	EXPANSION - TOWNHOME	1	\$836.49
CENTURY GARDENS AT TAMIAMI	30-5909-050-1400	EXPANSION - TOWNHOME	1	\$836.49
CENTURY GARDENS AT TAMIAMI	30-5909-050-1410	EXPANSION - TOWNHOME	1	\$836.49
CENTURY GARDENS AT TAMIAMI	30-5909-050-1420	EXPANSION - TOWNHOME	1	\$836.49
CENTURY GARDENS AT TAMIAMI	30-5909-050-1430	EXPANSION - TOWNHOME	1	\$836.49
CENTURY GARDENS AT TAMIAMI	30-5909-050-1440	EXPANSION - TOWNHOME	1	\$836.49
CENTURY GARDENS AT TAMIAMI	30-5909-050-1450	EXPANSION - TOWNHOME	1	\$836.49
CENTURY GARDENS AT TAMIAMI	30-5909-050-1460	EXPANSION - TOWNHOME	1	\$836.49
CENTURY GARDENS AT TAMIAMI	30-5909-050-1470	EXPANSION - TOWNHOME	1	\$836.49
CENTURY GARDENS AT TAMIAMI	30-5909-050-1480	EXPANSION - TOWNHOME	1	\$836.49
CENTURY GARDENS AT TAMIAMI	30-5909-050-1490	EXPANSION - TOWNHOME	1	\$836.49
CENTURY GARDENS AT TAMIAMI	30-5909-050-1500	EXPANSION - TOWNHOME	1	\$836.49
CENTURY GARDENS AT TAMIAMI	30-5909-050-1510	EXPANSION - TOWNHOME	1	\$836.49
CENTURY GARDENS AT TAMIAMI	30-5909-050-1520	EXPANSION - TOWNHOME	1	\$836.49
CENTURY GARDENS AT TAMIAMI	30-5909-050-1530	EXPANSION - TOWNHOME	1	\$836.49
CENTURY GARDENS AT TAMIAMI	30-5909-050-1540	EXPANSION - TOWNHOME	1	\$836.49
CENTURY GARDENS AT TAMIAMI	30-5909-050-1550	EXPANSION - TOWNHOME	1	\$836.49
CENTURY GARDENS AT TAMIAMI	30-5909-050-1560	EXPANSION - TOWNHOME	1	\$836.49
CENTURY GARDENS AT TAMIAMI	30-5909-050-1570	EXPANSION - TOWNHOME	1	\$836.49
CENTURY GARDENS AT TAMIAMI	30-5909-050-1580	EXPANSION - TOWNHOME	1	\$836.49
CENTURY GARDENS AT TAMIAMI	30-5909-050-1590	EXPANSION - TOWNHOME	1	\$836.49
CENTURY GARDENS AT TAMIAMI	30-5909-050-1600	EXPANSION - TOWNHOME	1	\$836.49
CENTURY GARDENS AT TAMIAMI	30-5909-050-1610	EXPANSION - TOWNHOME	1	\$836.49
CENTURY GARDENS AT TAMIAMI	30-5909-050-1620	EXPANSION - TOWNHOME	1	\$836.49
CENTURY GARDENS AT TAMIAMI	30-5909-050-1630	EXPANSION - TOWNHOME	1	\$836.49

**Has not been grossed up to include collection fees and discount for early payment.

EXHIBIT B

ALLOCATION OF DEBT SERVICE ASSESSMENT
SERIES 2018 BONDS

PRELIMINARY ASSESSMENT ROLL

CENTURY GARDENS AT TAMIAMI COMMUNITY DEVELOPMENT DISTRICT
(2018 PROJECT - EXPANSION AREA)

CENTURY GARDENS AT TAMIAMI	30-5909-050-1640	EXPANSION - TOWNHOME	1	\$836.49
CENTURY GARDENS AT TAMIAMI	30-5909-050-1650	EXPANSION - TOWNHOME	1	\$836.49
CENTURY GARDENS AT TAMIAMI	30-5909-050-1660	EXPANSION - TOWNHOME	1	\$836.49
CENTURY GARDENS AT TAMIAMI	30-5909-050-1670	EXPANSION - TOWNHOME	1	\$836.49
CENTURY GARDENS AT TAMIAMI	30-5909-050-1680	EXPANSION - TOWNHOME	1	\$836.49
CENTURY GARDENS AT TAMIAMI	30-5909-050-1690	EXPANSION - TOWNHOME	1	\$836.49
CENTURY GARDENS AT TAMIAMI	30-5909-050-1700	EXPANSION - TOWNHOME	1	\$836.49
CENTURY GARDENS AT TAMIAMI	30-5909-050-1710	EXPANSION - TOWNHOME	1	\$836.49
CENTURY GARDENS AT TAMIAMI	30-5909-050-1720	EXPANSION - TOWNHOME	1	\$836.49
CENTURY GARDENS AT TAMIAMI	30-5909-050-1730	EXPANSION - TOWNHOME	1	\$836.49
CENTURY GARDENS AT TAMIAMI	30-5909-050-1740	EXPANSION - TOWNHOME	1	\$836.49
CENTURY GARDENS AT TAMIAMI	30-5909-050-1750	EXPANSION - TOWNHOME	1	\$836.49
CENTURY GARDENS AT TAMIAMI	30-5909-050-1760	EXPANSION - TOWNHOME	1	\$836.49
CENTURY GARDENS AT TAMIAMI	30-5909-050-1770	EXPANSION - TOWNHOME	1	\$836.49
CENTURY GARDENS AT TAMIAMI	30-5909-050-1780	EXPANSION - TOWNHOME	1	\$836.49
CENTURY GARDENS AT TAMIAMI	30-5909-050-1790	EXPANSION - TOWNHOME	1	\$836.49
CENTURY GARDENS AT TAMIAMI	30-5909-050-1800	EXPANSION - TOWNHOME	1	\$836.49
CENTURY GARDENS AT TAMIAMI	30-5909-050-1810	EXPANSION - TOWNHOME	1	\$836.49
CENTURY GARDENS AT TAMIAMI	30-5909-050-1820	EXPANSION - TOWNHOME	1	\$836.49
CENTURY GARDENS AT TAMIAMI	30-5909-050-1830	EXPANSION - TOWNHOME	1	\$836.49
CENTURY GARDENS AT TAMIAMI	30-5909-050-1840	EXPANSION - TOWNHOME	1	\$836.49
CENTURY GARDENS AT TAMIAMI	30-5909-050-1850	EXPANSION - TOWNHOME	1	\$836.49
CENTURY GARDENS AT TAMIAMI	30-5909-050-1860	EXPANSION - TOWNHOME	1	\$836.49
CENTURY GARDENS AT TAMIAMI	30-5909-050-1870	EXPANSION - TOWNHOME	1	\$836.49
CENTURY GARDENS AT TAMIAMI	30-5909-050-1880	EXPANSION - TOWNHOME	1	\$836.49
CENTURY GARDENS AT TAMIAMI	30-5909-050-1890	EXPANSION - TOWNHOME	1	\$836.49
CENTURY GARDENS AT TAMIAMI	30-5909-050-1900	EXPANSION - TOWNHOME	1	\$836.49
CENTURY GARDENS AT TAMIAMI	30-5909-050-1910	EXPANSION - TOWNHOME	1	\$836.49
CENTURY GARDENS AT TAMIAMI	30-5909-050-1920	EXPANSION - TOWNHOME	1	\$836.49
CENTURY GARDENS AT TAMIAMI	30-5909-050-1930	EXPANSION - TOWNHOME	1	\$836.49
CENTURY GARDENS AT TAMIAMI	30-5909-050-1940	EXPANSION - TOWNHOME	1	\$836.49
CENTURY GARDENS AT TAMIAMI	30-5909-050-1950	EXPANSION - TOWNHOME	1	\$836.49
CENTURY GARDENS AT TAMIAMI	30-5909-050-1960	EXPANSION - TOWNHOME	1	\$836.49

**Has not been grossed up to include collection fees and discount for early payment.

EXHIBIT B

ALLOCATION OF DEBT SERVICE ASSESSMENT
SERIES 2018 BONDS

PRELIMINARY ASSESSMENT ROLL

CENTURY GARDENS AT TAMIAMI COMMUNITY DEVELOPMENT DISTRICT
(2018 PROJECT - EXPANSION AREA)

CENTURY GARDENS AT TAMIAMI	30-5909-050-1970	EXPANSION - TOWNHOME	1	\$836.49
CENTURY GARDENS AT TAMIAMI	30-5909-050-1980	EXPANSION - TOWNHOME	1	\$836.49
CENTURY GARDENS AT TAMIAMI	30-5909-050-1990	EXPANSION - TOWNHOME	1	\$836.49
CENTURY GARDENS AT TAMIAMI	30-5909-050-2000	EXPANSION - TOWNHOME	1	\$836.49
CENTURY GARDENS AT TAMIAMI	30-5909-050-2010	EXPANSION - TOWNHOME	1	\$836.49
CENTURY GARDENS AT TAMIAMI	30-5909-050-2020	EXPANSION - TOWNHOME	1	\$836.49
CENTURY GARDENS AT TAMIAMI	30-5909-050-2030	EXPANSION - TOWNHOME	1	\$836.49
CENTURY GARDENS AT TAMIAMI	30-5909-050-2040	EXPANSION - TOWNHOME	1	\$836.49
CENTURY GARDENS AT TAMIAMI	30-5909-050-2050	EXPANSION - TOWNHOME	1	\$836.49
CENTURY GARDENS AT TAMIAMI	30-5909-050-2060	EXPANSION - TOWNHOME	1	\$836.49
CENTURY GARDENS AT TAMIAMI	30-5909-050-2070	EXPANSION - TOWNHOME	1	\$836.49
CENTURY GARDENS AT TAMIAMI	30-5909-050-2080	EXPANSION - TOWNHOME	1	\$836.49
CENTURY GARDENS AT TAMIAMI	30-5909-050-2090	EXPANSION - TOWNHOME	1	\$836.49
CENTURY GARDENS AT TAMIAMI	30-5909-050-2100	EXPANSION - TOWNHOME	1	\$836.49
CENTURY GARDENS AT TAMIAMI	30-5909-050-2110	EXPANSION - TOWNHOME	1	\$836.49
CENTURY GARDENS AT TAMIAMI	30-5909-050-2120	EXPANSION - TOWNHOME	1	\$836.49
CENTURY GARDENS AT TAMIAMI	30-5909-050-2130	EXPANSION - TOWNHOME	1	\$836.49
CENTURY GARDENS AT TAMIAMI	30-5909-050-2140	EXPANSION - TOWNHOME	1	\$836.49
CENTURY GARDENS AT TAMIAMI	30-5909-050-2150	EXPANSION - TOWNHOME	1	\$836.49
CENTURY GARDENS AT TAMIAMI	30-5909-050-2160	EXPANSION - TOWNHOME	1	\$836.49
CENTURY GARDENS AT TAMIAMI	30-5909-050-2170	EXPANSION - TOWNHOME	1	\$836.49
CENTURY GARDENS AT TAMIAMI	30-5909-050-2180	EXPANSION - TOWNHOME	1	\$836.49
CENTURY GARDENS AT TAMIAMI	30-5909-050-2190	EXPANSION - TOWNHOME	1	\$836.49
CENTURY GARDENS AT TAMIAMI	30-5909-050-2200	EXPANSION - TOWNHOME	1	\$836.49
CENTURY GARDENS AT TAMIAMI	30-5909-050-2210	EXPANSION - TOWNHOME	1	\$836.49
CENTURY GARDENS AT TAMIAMI	30-5909-050-2220	EXPANSION - TOWNHOME	1	\$836.49
CENTURY GARDENS AT TAMIAMI	30-5909-050-2230	EXPANSION - TOWNHOME	1	\$836.49
CENTURY GARDENS AT TAMIAMI	30-5909-050-2240	EXPANSION - TOWNHOME	1	\$836.49
CENTURY GARDENS AT TAMIAMI	30-5909-050-2250	EXPANSION - TOWNHOME	1	\$836.49
CENTURY GARDENS AT TAMIAMI	30-5909-050-2260	EXPANSION - TOWNHOME	1	\$836.49
CENTURY GARDENS AT TAMIAMI	30-5909-050-2270	EXPANSION - TOWNHOME	1	\$836.49
CENTURY GARDENS AT TAMIAMI	30-5909-050-2280	EXPANSION - TOWNHOME	1	\$836.49
CENTURY GARDENS AT TAMIAMI	30-5909-050-2290	EXPANSION - TOWNHOME	1	\$836.49

**Has not been grossed up to include collection fees and discount for early payment.

EXHIBIT B

ALLOCATION OF DEBT SERVICE ASSESSMENT
SERIES 2018 BONDS

PRELIMINARY ASSESSMENT ROLL

CENTURY GARDENS AT TAMIAMI COMMUNITY DEVELOPMENT DISTRICT
(2018 PROJECT - EXPANSION AREA)

CENTURY GARDENS AT TAMIAMI	30-5909-050-2300	EXPANSION - TOWNHOME	1	\$836.49
CENTURY GARDENS AT TAMIAMI	30-5909-050-2310	EXPANSION - TOWNHOME	1	\$836.49
CENTURY GARDENS AT TAMIAMI	30-5909-050-2320	EXPANSION - TOWNHOME	1	\$836.49
CENTURY GARDENS AT TAMIAMI	30-5909-050-2330	EXPANSION - TOWNHOME	1	\$836.49
CENTURY GARDENS AT TAMIAMI	30-5909-050-2340	EXPANSION - TOWNHOME	1	\$836.49
CENTURY GARDENS AT TAMIAMI	30-5909-050-2350	EXPANSION - TOWNHOME	1	\$836.49
CENTURY GARDENS AT TAMIAMI	30-5909-050-2360	EXPANSION - TOWNHOME	1	\$836.49
CENTURY GARDENS AT TAMIAMI	30-5909-050-2370	EXPANSION - TOWNHOME	1	\$836.49
CENTURY GARDENS AT TAMIAMI	30-5909-050-2380	EXPANSION - TOWNHOME	1	\$836.49
CENTURY GARDENS AT TAMIAMI	30-5909-050-2390	EXPANSION - VILLA	1	\$836.49
CENTURY GARDENS AT TAMIAMI	30-5909-050-2400	EXPANSION - VILLA	1	\$836.49
CENTURY GARDENS AT TAMIAMI	30-5909-050-2410	EXPANSION - VILLA	1	\$836.49
CENTURY GARDENS AT TAMIAMI	30-5909-050-2420	EXPANSION - VILLA	1	\$836.49
CENTURY GARDENS AT TAMIAMI	30-5909-050-2430	EXPANSION - VILLA	1	\$836.49
CENTURY GARDENS AT TAMIAMI	30-5909-050-2440	EXPANSION - VILLA	1	\$836.49
CENTURY GARDENS AT TAMIAMI	30-5909-050-2450	EXPANSION - VILLA	1	\$836.49
CENTURY GARDENS AT TAMIAMI	30-5909-050-2460	EXPANSION - VILLA	1	\$836.49
CENTURY GARDENS AT TAMIAMI	30-5909-050-2470	EXPANSION - VILLA	1	\$836.49
CENTURY GARDENS AT TAMIAMI	30-5909-050-2480	EXPANSION - VILLA	1	\$836.49
CENTURY GARDENS AT TAMIAMI	30-5909-050-2490	EXPANSION - VILLA	1	\$836.49
CENTURY GARDENS AT TAMIAMI	30-5909-050-2500	EXPANSION - VILLA	1	\$836.49
CENTURY GARDENS AT TAMIAMI	30-5909-050-2510	EXPANSION - VILLA	1	\$836.49
CENTURY GARDENS AT TAMIAMI	30-5909-050-2520	EXPANSION - VILLA	1	\$836.49
CENTURY GARDENS AT TAMIAMI	30-5909-050-2530	EXPANSION - VILLA	1	\$836.49
CENTURY GARDENS AT TAMIAMI	30-5909-050-2540	EXPANSION - VILLA	1	\$836.49
CENTURY GARDENS AT TAMIAMI	30-5909-050-2550	EXPANSION - VILLA	1	\$836.49
CENTURY GARDENS AT TAMIAMI	30-5909-050-2560	EXPANSION - VILLA	1	\$836.49
CENTURY GARDENS AT TAMIAMI	30-5909-050-2570	EXPANSION - VILLA	1	\$836.49
CENTURY GARDENS AT TAMIAMI	30-5909-050-2580	EXPANSION - VILLA	1	\$836.49
CENTURY GARDENS AT TAMIAMI	30-5909-050-2590	EXPANSION - VILLA	1	\$836.49
CENTURY GARDENS AT TAMIAMI	30-5909-050-2600	EXPANSION - VILLA	1	\$836.49
CENTURY GARDENS AT TAMIAMI	30-5909-050-2610	EXPANSION - VILLA	1	\$836.49
CENTURY GARDENS AT TAMIAMI	30-5909-050-2620	EXPANSION - VILLA	1	\$836.49

**Has not been grossed up to include collection fees and discount for early payment.

EXHIBIT B

ALLOCATION OF DEBT SERVICE ASSESSMENT
SERIES 2018 BONDS

PRELIMINARY ASSESSMENT ROLL

CENTURY GARDENS AT TAMIAMI COMMUNITY DEVELOPMENT DISTRICT
(2018 PROJECT - EXPANSION AREA)

CENTURY GARDENS AT TAMIAMI	30-5909-050-2630	EXPANSION - VILLA	1	\$836.49
CENTURY GARDENS AT TAMIAMI	30-5909-050-2640	EXPANSION - VILLA	1	\$836.49
CENTURY GARDENS AT TAMIAMI	30-5909-050-2650	EXPANSION - VILLA	1	\$836.49
CENTURY GARDENS AT TAMIAMI	30-5909-050-2660	EXPANSION - VILLA	1	\$836.49
CENTURY GARDENS AT TAMIAMI	30-5909-050-2670	EXPANSION - VILLA	1	\$836.49
CENTURY GARDENS AT TAMIAMI	30-5909-050-2680	EXPANSION - VILLA	1	\$836.49
CENTURY GARDENS AT TAMIAMI	30-5909-050-2690	EXPANSION - VILLA	1	\$836.49
CENTURY GARDENS AT TAMIAMI	30-5909-050-2700	EXPANSION - VILLA	1	\$836.49
CENTURY GARDENS AT TAMIAMI	30-5909-050-2710	EXPANSION - VILLA	1	\$836.49
CENTURY GARDENS AT TAMIAMI	30-5909-050-2720	EXPANSION - VILLA	1	\$836.49
CENTURY GARDENS AT TAMIAMI	30-5909-050-2730	EXPANSION - VILLA	1	\$836.49
CENTURY GARDENS AT TAMIAMI	30-5909-050-2740	EXPANSION - VILLA	1	\$836.49
CENTURY GARDENS AT TAMIAMI	30-5909-050-2750	EXPANSION - VILLA	1	\$836.49
CENTURY GARDENS AT TAMIAMI	30-5909-050-2760	EXPANSION - VILLA	1	\$836.49
CENTURY GARDENS AT TAMIAMI	30-5909-050-2770	EXPANSION - VILLA	1	\$836.49
CENTURY GARDENS AT TAMIAMI	30-5909-050-2780	EXPANSION - VILLA	1	\$836.49
CENTURY GARDENS AT TAMIAMI	30-5909-050-2790	EXPANSION - VILLA	1	\$836.49
CENTURY GARDENS AT TAMIAMI	30-5909-050-2800	EXPANSION - VILLA	1	\$836.49
CENTURY GARDENS AT TAMIAMI	30-5909-050-2810	EXPANSION - VILLA	1	\$836.49
CENTURY GARDENS AT TAMIAMI	30-5909-050-2820	EXPANSION - VILLA	1	\$836.49
CENTURY GARDENS AT TAMIAMI	30-5909-050-2830	EXPANSION - VILLA	1	\$836.49
CENTURY GARDENS AT TAMIAMI	30-5909-050-2840	EXPANSION - VILLA	1	\$836.49
CENTURY GARDENS AT TAMIAMI	30-5909-050-2850	EXPANSION - VILLA	1	\$836.49
CENTURY GARDENS AT TAMIAMI	30-5909-050-2860	EXPANSION - VILLA	1	\$836.49
CENTURY GARDENS AT TAMIAMI	30-5909-050-2870	EXPANSION - VILLA	1	\$836.49
CENTURY GARDENS AT TAMIAMI	30-5909-050-2880	EXPANSION - VILLA	1	\$836.49
CENTURY GARDENS AT TAMIAMI	30-5909-050-2890	EXPANSION - VILLA	1	\$836.49
CENTURY GARDENS AT TAMIAMI	30-5909-050-2900	EXPANSION - VILLA	1	\$836.49
CENTURY GARDENS AT TAMIAMI	30-5909-050-2910	EXPANSION - VILLA	1	\$836.49
CENTURY GARDENS AT TAMIAMI	30-5909-050-2920	EXPANSION - VILLA	1	\$836.49
CENTURY GARDENS AT TAMIAMI	30-5909-050-2930	EXPANSION - VILLA	1	\$836.49
CENTURY GARDENS AT TAMIAMI	30-5909-050-2940	EXPANSION - VILLA	1	\$836.49
CENTURY GARDENS AT TAMIAMI	30-5909-050-2950	EXPANSION - VILLA	1	\$836.49

**Has not been grossed up to include collection fees and discount for early payment.

EXHIBIT B

ALLOCATION OF DEBT SERVICE ASSESSMENT
SERIES 2018 BONDS

PRELIMINARY ASSESSMENT ROLL

CENTURY GARDENS AT TAMIAMI COMMUNITY DEVELOPMENT DISTRICT
(2018 PROJECT - EXPANSION AREA)

CENTURY GARDENS AT TAMIAMI	30-5909-050-2960	EXPANSION - VILLA	1	\$836.49
CENTURY GARDENS AT TAMIAMI	30-5909-050-2970	EXPANSION - VILLA	1	\$836.49
CENTURY GARDENS AT TAMIAMI	30-5909-050-2980	EXPANSION - VILLA	1	\$836.49
CENTURY GARDENS AT TAMIAMI	30-5909-050-2990	EXPANSION - VILLA	1	\$836.49
CENTURY GARDENS AT TAMIAMI	30-5909-050-3000	EXPANSION - VILLA	1	\$836.49
CENTURY GARDENS AT TAMIAMI	30-5909-050-3010	EXPANSION - VILLA	1	\$836.49
CENTURY GARDENS AT TAMIAMI	30-5909-050-3020	EXPANSION - VILLA	1	\$836.49
CENTURY GARDENS AT TAMIAMI	30-5909-050-3030	EXPANSION - VILLA	1	\$836.49
CENTURY GARDENS AT TAMIAMI	30-5909-050-3040	EXPANSION - VILLA	1	\$836.49
CENTURY GARDENS AT TAMIAMI	30-5909-050-3050	EXPANSION - VILLA	1	\$836.49
CENTURY GARDENS AT TAMIAMI	30-5909-050-3060	EXPANSION - VILLA	1	\$836.49
CENTURY GARDENS AT TAMIAMI	30-5909-050-3070	EXPANSION - VILLA	1	\$836.49
CENTURY GARDENS AT TAMIAMI	30-5909-050-3080	EXPANSION - VILLA	1	\$836.49
CENTURY GARDENS AT TAMIAMI	30-5909-050-3090	EXPANSION - VILLA	1	\$836.49
CENTURY GARDENS AT TAMIAMI	30-5909-050-3100	EXPANSION - VILLA	1	\$836.49
CENTURY GARDENS AT TAMIAMI	30-5909-050-3110	EXPANSION - VILLA	1	\$836.49
CENTURY GARDENS AT TAMIAMI	30-5909-050-3120	EXPANSION - VILLA	1	\$836.49
CENTURY GARDENS AT TAMIAMI	30-5909-050-3130	EXPANSION - VILLA	1	\$836.49
CENTURY GARDENS AT TAMIAMI	30-5909-050-3140	EXPANSION - VILLA	1	\$836.49
CENTURY GARDENS AT TAMIAMI	30-5909-050-3150	EXPANSION - VILLA	1	\$836.49
CENTURY GARDENS AT TAMIAMI	30-5909-050-3160	EXPANSION - VILLA	1	\$836.49
CENTURY GARDENS AT TAMIAMI	30-5909-050-3170	EXPANSION - VILLA	1	\$836.49
CENTURY GARDENS AT TAMIAMI	30-5909-050-3180	EXPANSION - VILLA	1	\$836.49
CENTURY GARDENS AT TAMIAMI	30-5909-050-3190	EXPANSION - VILLA	1	\$836.49
CENTURY GARDENS AT TAMIAMI	30-5909-050-3200	EXPANSION - VILLA	1	\$836.49
CENTURY GARDENS AT TAMIAMI	30-5909-050-3210	EXPANSION - VILLA	1	\$836.49
CENTURY GARDENS AT TAMIAMI	30-5909-050-3220	EXPANSION - VILLA	1	\$836.49
CENTURY GARDENS AT TAMIAMI	30-5909-050-3230	EXPANSION - VILLA	1	\$836.49
CENTURY GARDENS AT TAMIAMI	30-5909-050-3240	EXPANSION - VILLA	1	\$836.49
CENTURY GARDENS AT TAMIAMI	30-5909-050-3250	EXPANSION - VILLA	1	\$836.49
CENTURY GARDENS AT TAMIAMI	30-5909-050-3260	EXPANSION - VILLA	1	\$836.49
CENTURY GARDENS AT TAMIAMI	30-5909-050-3270	EXPANSION - VILLA	1	\$836.49
CENTURY GARDENS AT TAMIAMI	30-5909-050-3280	EXPANSION - VILLA	1	\$836.49

**Has not been grossed up to include collection fees and discount for early payment.

EXHIBIT B

ALLOCATION OF DEBT SERVICE ASSESSMENT
SERIES 2018 BONDS

PRELIMINARY ASSESSMENT ROLL

CENTURY GARDENS AT TAMIAMI COMMUNITY DEVELOPMENT DISTRICT
(2018 PROJECT - EXPANSION AREA)

CENTURY GARDENS AT TAMIAMI	30-5909-050-3290	EXPANSION - VILLA	1	\$836.49
CENTURY GARDENS AT TAMIAMI	30-5909-050-3300	EXPANSION - VILLA	1	\$836.49
CENTURY GARDENS AT TAMIAMI	30-5909-050-3310	EXPANSION - VILLA	1	\$836.49
CENTURY GARDENS AT TAMIAMI	30-5909-050-3320	EXPANSION - VILLA	1	\$836.49
CENTURY GARDENS AT TAMIAMI	30-5909-050-3330	EXPANSION - VILLA	1	\$836.49
CENTURY GARDENS AT TAMIAMI	30-5909-050-3340	EXPANSION - VILLA	1	\$836.49
CENTURY GARDENS AT TAMIAMI	30-5909-050-3350	EXPANSION - VILLA	1	\$836.49
CENTURY GARDENS AT TAMIAMI	30-5909-050-3360	EXPANSION - VILLA	1	\$836.49
CENTURY GARDENS AT TAMIAMI	30-5909-050-3370	EXPANSION - VILLA	1	\$836.49
CENTURY GARDENS AT TAMIAMI	30-5909-050-3380	EXPANSION - VILLA	1	\$836.49
CENTURY GARDENS AT TAMIAMI	30-5909-050-3390	EXPANSION - VILLA	1	\$836.49
CENTURY GARDENS AT TAMIAMI	30-5909-050-3400	EXPANSION - VILLA	1	\$836.49
CENTURY GARDENS AT TAMIAMI	30-5909-050-3410	EXPANSION - VILLA	1	\$836.49
CENTURY GARDENS AT TAMIAMI	30-5909-050-3420	EXPANSION - VILLA	1	\$836.49
CENTURY GARDENS AT TAMIAMI	30-5909-050-3430	EXPANSION - VILLA	1	\$836.49
CENTURY GARDENS AT TAMIAMI	30-5909-050-3440	EXPANSION - VILLA	1	\$836.49
CENTURY GARDENS AT TAMIAMI	30-5909-050-3450	EXPANSION - VILLA	1	\$836.49
CENTURY GARDENS AT TAMIAMI	30-5909-050-3460	EXPANSION - VILLA	1	\$836.49
CENTURY GARDENS AT TAMIAMI	30-5909-050-3470	EXPANSION - VILLA	1	\$836.49
CENTURY GARDENS AT TAMIAMI	30-5909-050-3480	EXPANSION - VILLA	1	\$836.49
CENTURY GARDENS AT TAMIAMI	30-5909-050-3490	EXPANSION - VILLA	1	\$836.49
CENTURY GARDENS AT TAMIAMI	30-5909-050-3500	EXPANSION - VILLA	1	\$836.49
CENTURY GARDENS AT TAMIAMI	30-5909-050-3510	EXPANSION - VILLA	1	\$836.49
CENTURY GARDENS AT TAMIAMI	30-5909-050-3520	EXPANSION - VILLA	1	\$836.49
CENTURY GARDENS AT TAMIAMI	30-5909-050-3530	EXPANSION - VILLA	1	\$836.49
CENTURY GARDENS AT TAMIAMI	30-5909-050-3540	EXPANSION - VILLA	1	\$836.49
CENTURY GARDENS AT TAMIAMI	30-5909-050-3550	EXPANSION - VILLA	1	\$836.49
CENTURY GARDENS AT TAMIAMI	30-5909-050-3560	EXPANSION - VILLA	1	\$836.49
CENTURY GARDENS AT TAMIAMI	30-5909-050-3570	EXPANSION - VILLA	1	\$836.49
CENTURY GARDENS AT TAMIAMI	30-5909-050-3580	EXPANSION - VILLA	1	\$836.49
CENTURY GARDENS AT TAMIAMI	30-5909-050-3590	EXPANSION - VILLA	1	\$836.49
CENTURY GARDENS AT TAMIAMI	30-5909-050-3600	EXPANSION - VILLA	1	\$836.49
CENTURY GARDENS AT TAMIAMI	30-5909-050-3610	EXPANSION - VILLA	1	\$836.49

**Has not been grossed up to include collection fees and discount for early payment.

EXHIBIT B

ALLOCATION OF DEBT SERVICE ASSESSMENT
SERIES 2018 BONDS

PRELIMINARY ASSESSMENT ROLL

CENTURY GARDENS AT TAMIAMI COMMUNITY DEVELOPMENT DISTRICT
(2018 PROJECT - EXPANSION AREA)

CENTURY GARDENS AT TAMIAMI	30-5909-050-3620	EXPANSION - VILLA	1	\$836.49
CENTURY GARDENS AT TAMIAMI	30-5909-050-3630	EXPANSION - VILLA	1	\$836.49
CENTURY GARDENS AT TAMIAMI	30-5909-050-3640	EXPANSION - VILLA	1	\$836.49
CENTURY GARDENS AT TAMIAMI	30-5909-050-3650	EXPANSION - VILLA	1	\$836.49
CENTURY GARDENS AT TAMIAMI	30-5909-050-3660	EXPANSION - VILLA	1	\$836.49
CENTURY GARDENS AT TAMIAMI	30-5909-050-3670	EXPANSION - VILLA	1	\$836.49
CENTURY GARDENS AT TAMIAMI	30-5909-050-3680	EXPANSION - VILLA	1	\$836.49
CENTURY GARDENS AT TAMIAMI	30-5909-050-3690	EXPANSION - VILLA	1	\$836.49
CENTURY GARDENS AT TAMIAMI	30-5909-050-3700	EXPANSION - VILLA	1	\$836.49
CENTURY GARDENS AT TAMIAMI	30-5909-050-3710	EXPANSION - VILLA	1	\$836.49
CENTURY GARDENS AT TAMIAMI	30-5909-050-3720	EXPANSION - VILLA	1	\$836.49
CENTURY GARDENS AT TAMIAMI	30-5909-050-3730	EXPANSION - VILLA	1	\$836.49
CENTURY GARDENS AT TAMIAMI	30-5909-050-3740	EXPANSION - VILLA	1	\$836.49
CENTURY GARDENS AT TAMIAMI	30-5909-050-3750	EXPANSION - VILLA	1	\$836.49
CENTURY GARDENS AT TAMIAMI	30-5909-050-3760	EXPANSION - VILLA	1	\$836.49
CENTURY GARDENS AT TAMIAMI	30-5909-050-3770	EXPANSION - VILLA	1	\$836.49
CENTURY GARDENS AT TAMIAMI	30-5909-050-3780	EXPANSION - VILLA	1	\$836.49
CENTURY GARDENS AT TAMIAMI	30-5909-050-3790	EXPANSION - VILLA	1	\$836.49
CENTURY GARDENS AT TAMIAMI	30-5909-050-3800	EXPANSION - VILLA	1	\$836.49
CENTURY GARDENS AT TAMIAMI	30-5909-050-3810	EXPANSION - VILLA	1	\$836.49
CENTURY GARDENS AT TAMIAMI	30-5909-050-3820	EXPANSION - VILLA	1	\$836.49
CENTURY GARDENS AT TAMIAMI	30-5909-050-3830	EXPANSION - VILLA	1	\$836.49
CENTURY GARDENS AT TAMIAMI	30-5909-050-3840	EXPANSION - VILLA	1	\$836.49
CENTURY GARDENS AT TAMIAMI	30-5909-050-3850	EXPANSION - VILLA	1	\$836.49
CENTURY GARDENS AT TAMIAMI	30-5909-050-3860	EXPANSION - VILLA	1	\$836.49
CENTURY GARDENS AT TAMIAMI	30-5909-050-3870	EXPANSION - VILLA	1	\$836.49
CENTURY GARDENS AT TAMIAMI	30-5909-050-3880	EXPANSION - VILLA	1	\$836.49
CENTURY GARDENS AT TAMIAMI	30-5909-050-3890	EXPANSION - VILLA	1	\$836.49
CENTURY GARDENS AT TAMIAMI	30-5909-050-3900	EXPANSION - VILLA	1	\$836.49
CENTURY GARDENS AT TAMIAMI	30-5909-050-3910	EXPANSION - VILLA	1	\$836.49
CENTURY GARDENS AT TAMIAMI	30-5909-050-3920	EXPANSION - VILLA	1	\$836.49
CENTURY GARDENS AT TAMIAMI	30-5909-050-3930	EXPANSION - VILLA	1	\$836.49
CENTURY GARDENS AT TAMIAMI	30-5909-050-3940	EXPANSION - VILLA	1	\$836.49

**Has not been grossed up to include collection fees and discount for early payment.

EXHIBIT B

ALLOCATION OF DEBT SERVICE ASSESSMENT
SERIES 2018 BONDS

PRELIMINARY ASSESSMENT ROLL

CENTURY GARDENS AT TAMIAMI COMMUNITY DEVELOPMENT DISTRICT
(2018 PROJECT - EXPANSION AREA)

CENTURY GARDENS AT TAMIAMI	30-5909-050-3950	EXPANSION - VILLA	1	\$836.49
CENTURY GARDENS AT TAMIAMI	30-5909-050-3960	EXPANSION - VILLA	1	\$836.49
CENTURY GARDENS AT TAMIAMI	30-5909-050-3970	EXPANSION - VILLA	1	\$836.49
CENTURY GARDENS AT TAMIAMI	30-5909-050-3980	EXPANSION - VILLA	1	\$836.49
CENTURY GARDENS AT TAMIAMI	30-5909-051-0010	GARDEN ESTATES EAST - TOWNHOME	1	\$836.49
CENTURY GARDENS AT TAMIAMI	30-5909-051-0020	GARDEN ESTATES EAST - TOWNHOME	1	\$836.49
CENTURY GARDENS AT TAMIAMI	30-5909-051-0030	GARDEN ESTATES EAST - TOWNHOME	1	\$836.49
CENTURY GARDENS AT TAMIAMI	30-5909-051-0040	GARDEN ESTATES EAST - TOWNHOME	1	\$836.49
CENTURY GARDENS AT TAMIAMI	30-5909-051-0050	GARDEN ESTATES EAST - TOWNHOME	1	\$836.49
CENTURY GARDENS AT TAMIAMI	30-5909-051-0060	GARDEN ESTATES EAST - TOWNHOME	1	\$836.49
CENTURY GARDENS AT TAMIAMI	30-5909-051-0070	GARDEN ESTATES EAST - TOWNHOME	1	\$836.49
CENTURY GARDENS AT TAMIAMI	30-5909-051-0080	GARDEN ESTATES EAST - TOWNHOME	1	\$836.49
CENTURY GARDENS AT TAMIAMI	30-5909-051-0090	GARDEN ESTATES EAST - TOWNHOME	1	\$836.49
CENTURY GARDENS AT TAMIAMI	30-5909-051-0100	GARDEN ESTATES EAST - TOWNHOME	1	\$836.49
CENTURY GARDENS AT TAMIAMI	30-5909-051-0110	GARDEN ESTATES EAST - TOWNHOME	1	\$836.49
CENTURY GARDENS AT TAMIAMI	30-5909-051-0120	GARDEN ESTATES EAST - TOWNHOME	1	\$836.49
CENTURY GARDENS AT TAMIAMI	30-5909-051-0130	GARDEN ESTATES EAST - TOWNHOME	1	\$836.49
CENTURY GARDENS AT TAMIAMI	30-5909-051-0140	GARDEN ESTATES EAST - TOWNHOME	1	\$836.49
CENTURY GARDENS AT TAMIAMI	30-5909-051-0150	GARDEN ESTATES EAST - TOWNHOME	1	\$836.49
CENTURY GARDENS AT TAMIAMI	30-5909-051-0160	GARDEN ESTATES EAST - TOWNHOME	1	\$836.49
CENTURY GARDENS AT TAMIAMI	30-5909-051-0170	GARDEN ESTATES EAST - TOWNHOME	1	\$836.49
CENTURY GARDENS AT TAMIAMI	30-5909-051-0180	GARDEN ESTATES EAST - TOWNHOME	1	\$836.49
CENTURY GARDENS AT TAMIAMI	30-5909-051-0190	GARDEN ESTATES EAST - TOWNHOME	1	\$836.49
CENTURY GARDENS AT TAMIAMI	30-5909-051-0200	GARDEN ESTATES EAST - TOWNHOME	1	\$836.49
CENTURY GARDENS AT TAMIAMI	30-5909-051-0210	GARDEN ESTATES EAST - TOWNHOME	1	\$836.49
CENTURY GARDENS AT TAMIAMI	30-5909-051-0220	GARDEN ESTATES EAST - TOWNHOME	1	\$836.49
CENTURY GARDENS AT TAMIAMI	30-5909-051-0230	GARDEN ESTATES EAST - TOWNHOME	1	\$836.49
CENTURY GARDENS AT TAMIAMI	30-5909-051-0240	GARDEN ESTATES EAST - TOWNHOME	1	\$836.49
CENTURY GARDENS AT TAMIAMI	30-5909-051-0250	GARDEN ESTATES EAST - TOWNHOME	1	\$836.49
CENTURY GARDENS AT TAMIAMI	30-5909-051-0260	GARDEN ESTATES EAST - TOWNHOME	1	\$836.49
CENTURY GARDENS AT TAMIAMI	30-5909-051-0270	GARDEN ESTATES EAST - TOWNHOME	1	\$836.49
CENTURY GARDENS AT TAMIAMI	30-5909-051-0280	GARDEN ESTATES EAST - TOWNHOME	1	\$836.49
CENTURY GARDENS AT TAMIAMI	30-5909-051-0290	GARDEN ESTATES EAST - TOWNHOME	1	\$836.49

**Has not been grossed up to include collection fees and discount for early payment.

EXHIBIT B

ALLOCATION OF DEBT SERVICE ASSESSMENT
SERIES 2018 BONDS

PRELIMINARY ASSESSMENT ROLL

CENTURY GARDENS AT TAMIAMI COMMUNITY DEVELOPMENT DISTRICT
(2018 PROJECT - EXPANSION AREA)

CENTURY GARDENS AT TAMIAMI	30-5909-051-0300	GARDEN ESTATES EAST - TOWNHOME	1	\$836.49
CENTURY GARDENS AT TAMIAMI	30-5909-051-0310	GARDEN ESTATES EAST - TOWNHOME	1	\$836.49
CENTURY GARDENS AT TAMIAMI	30-5909-051-0320	GARDEN ESTATES EAST - TOWNHOME	1	\$836.49
CENTURY GARDENS AT TAMIAMI	30-5909-051-0330	GARDEN ESTATES EAST - TOWNHOME	1	\$836.49
CENTURY GARDENS AT TAMIAMI	30-5909-051-0340	GARDEN ESTATES EAST - TOWNHOME	1	\$836.49
CENTURY GARDENS AT TAMIAMI	30-5909-051-0350	GARDEN ESTATES EAST - TOWNHOME	1	\$836.49
CENTURY GARDENS AT TAMIAMI	30-5909-051-0360	GARDEN ESTATES EAST - TOWNHOME	1	\$836.49
CENTURY GARDENS AT TAMIAMI	30-5909-051-0370	GARDEN ESTATES EAST - TOWNHOME	1	\$836.49
CENTURY GARDENS AT TAMIAMI	30-5909-051-0380	GARDEN ESTATES EAST - TOWNHOME	1	\$836.49
CENTURY GARDENS AT TAMIAMI	30-5909-051-0390	GARDEN ESTATES EAST - TOWNHOME	1	\$836.49
CENTURY GARDENS AT TAMIAMI	30-5909-051-0400	GARDEN ESTATES EAST - TOWNHOME	1	\$836.49
CENTURY GARDENS AT TAMIAMI	30-5909-051-0410	GARDEN ESTATES EAST - TOWNHOME	1	\$836.49
CENTURY GARDENS AT TAMIAMI	30-5909-051-0420	GARDEN ESTATES EAST - TOWNHOME	1	\$836.49
CENTURY GARDENS AT TAMIAMI	30-5909-051-0430	GARDEN ESTATES EAST - TOWNHOME	1	\$836.49
CENTURY GARDENS AT TAMIAMI	30-5909-051-0440	GARDEN ESTATES EAST - TOWNHOME	1	\$836.49
CENTURY GARDENS AT TAMIAMI	30-5909-051-0450	GARDEN ESTATES EAST - TOWNHOME	1	\$836.49
CENTURY GARDENS AT TAMIAMI	30-5909-051-0460	GARDEN ESTATES EAST - TOWNHOME	1	\$836.49
CENTURY GARDENS AT TAMIAMI	30-5909-051-0470	GARDEN ESTATES EAST - TOWNHOME	1	\$836.49
**TOTAL	N/A	N/A	445	\$372,238.05

**Has not been grossed up to include collection fees and discount for early payment.